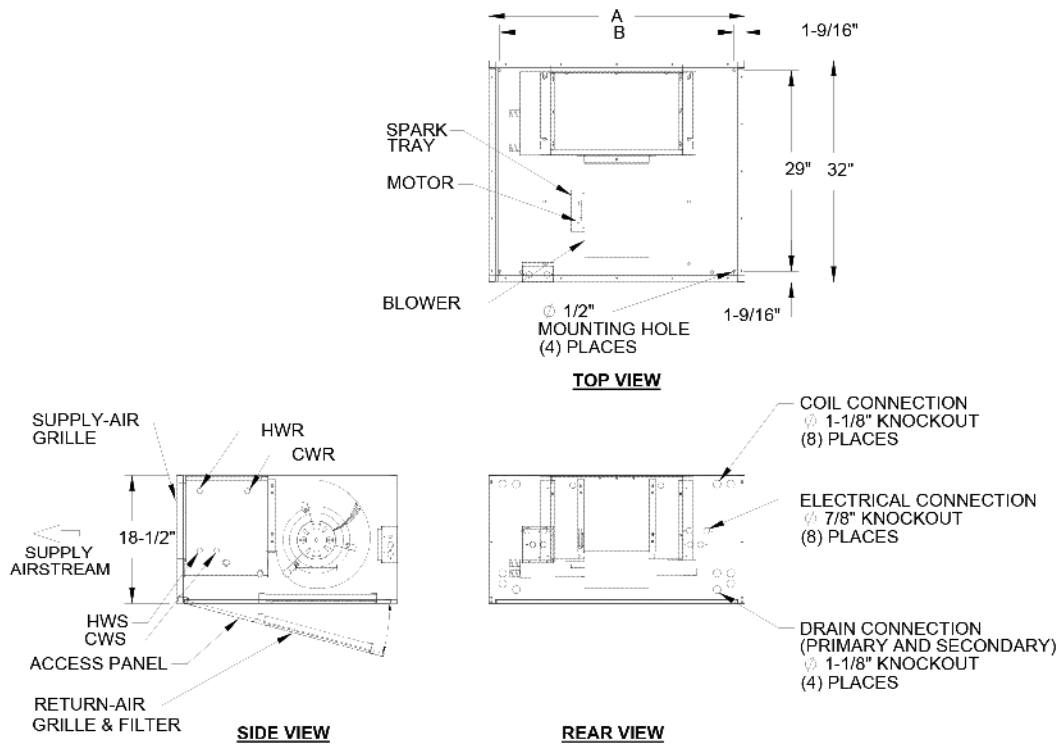


# HIGH PERFORMANCE HORIZONTAL DELUXE

H3-D / 600 - 1,200 CFM

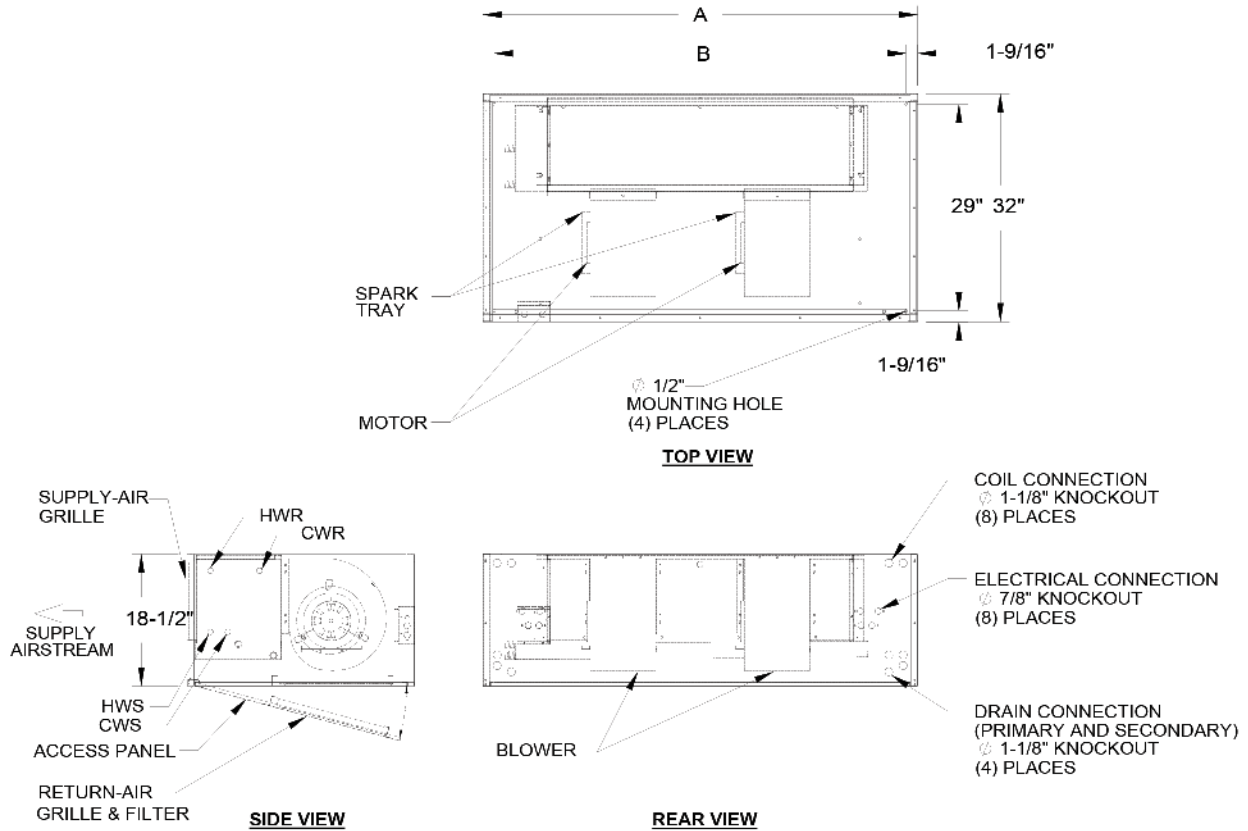


MODEL DELUXE	A	B	FILTER SIZE
600	33	29-7/8	17 X 28 X 1
800	37	33-7/8	17 X 34 X 1
1000	43	39-7/8	17 X 40 X 1
1200	49	45-7/8	17 X 46 X 1

- All sizes shown in inches.
- Right hand unit shown, left hand unit opposite.
- Coil connections determined by facing the supply air opening.
- Electrical junction box is located on the same side as the coil connections.
- Unit must be installed level and condensate drain lines should be trapped.
- Drain pan is powder coated epoxy with a 1/8" thick closed cell insulation and has 3/4" NPT primary and secondary drain connections.
- Entire cabinet, scroll and blower wheel are heavy-gauge, galvanized steel.
- Coil connections: 1/2" CW on HH006, 3/4" on HH008-012 and 1/2" HW on HH006-12.

# HIGH PERFORMANCE HORIZONTAL DELUXE

H3-D / 1,500 - 2,200 CFM



MODEL DELUXE	A	B	FILTER SIZE
1500	55	51-7/8	(1) 17 X 46 X 1
1800	61	57-7/8	(1) 17 X 52 X 1
2200	67	63-7/8	(1) 17 X 52 X 1

- All sizes shown in inches.
- Right hand unit shown, left hand unit opposite.
- Coil connections determined by facing the supply air opening.
- Electrical junction box is located on the same side as the coil connections.
- Unit must be installed level and condensate drain lines should be trapped.
- Drain pan is powder coated epoxy with a 1/8" thick closed-cell insulation and has 3/4" NPT primary and secondary drain connections.
- Entire cabinet, scroll and blower wheel are heavy gauge, galvanized steel.
- Coil connections: 3/4" CW on HH015-022 and 1/2" HW on HH015-022.