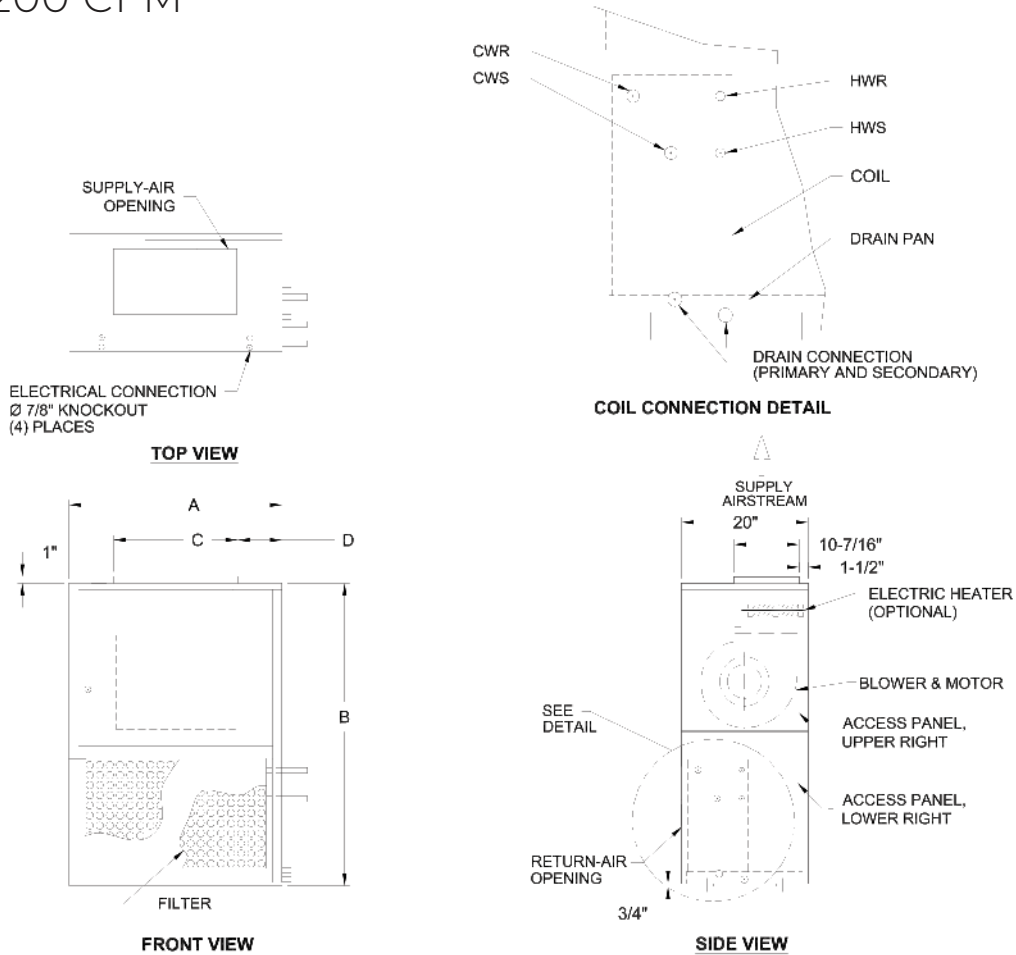


# HIGH PERFORMANCE CASED VERTICAL

## C2-R FRONT RETURN / TOP SUPPLY 600 - 1,200 CFM



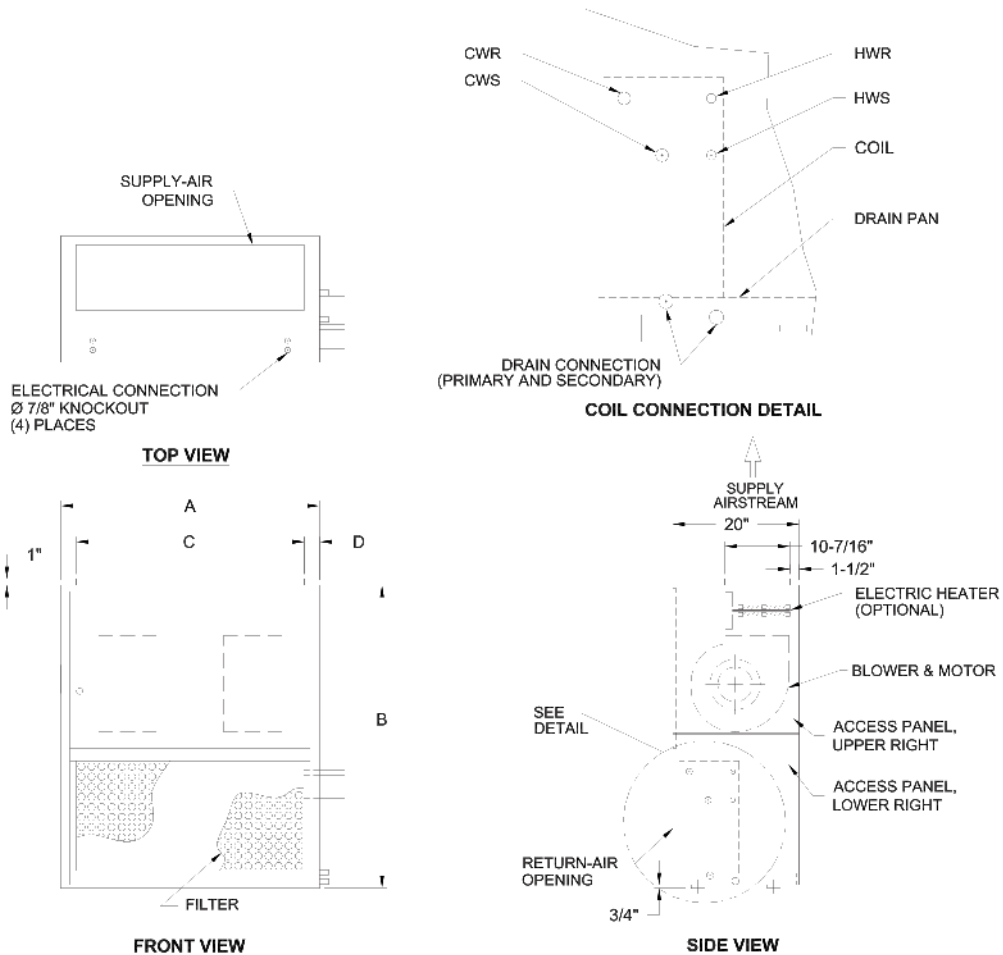
MODEL FRONT RETURN / TOP SUPPLY	A	B	C	D	E
600	21	42	12-1/4	4-3/8	16 x 16 x 1
800	25	42	12-1/4	6-3/8	16 x 20 x 1
1000	25	45	12-1/4	6-3/8	20 x 20 x 1
1200	30	45	12-1/4	8-7/8	20 x 256 x 1

- All sizes shown in inches.
- Right hand unit shown, left hand unit opposite.
- Coil connections determined by facing the supply air opening.
- Electrical junction box is located on the same side as the coil connections.
- Unit must be installed level and condensate drain lines should be trapped.
- Drain pan is powder-coated epoxy with a 1/8" thick closed cell insulation and has 3/4" NPT primary and secondary drain connections.
- Entire cabinet, scroll and blower wheel are heavy gauge, galvanized steel.
- Coil connections: 1/2" CW for CV006, 3/4" on CV008-012 chilled water, 1/2" HW on CV006-012 hot water.

# HIGH PERFORMANCE CASED VERTICAL

## C2-R FRONT RETURN / TOP SUPPLY

1,500 - 2,200 CFM



MODEL FRONT RETURN / TOP SUPPLY	A	B	C	D	FILTER SIZE
1500	37	48	25-1/4	5-7/8	25 X 25 X 1
1800	37	48	32-1/4	2-3/8	(2) 25 X 16 X 1
2200	41	48	36-1/4	2-3/8	(2) 25 X 20 X 1

- All sizes shown in inches.
- Right hand unit shown, left hand unit opposite.
- Coil connections determined by facing the supply air opening.
- Electrical junction box is located on the same side as the coil connections.
- Unit must be installed level and condensate drain lines should be trapped.
- Drain pan is powder coated epoxy with a 1/8" thick closed cell insulation and has 3/4" NPT primary and secondary drain connections.
- Entire cabinet, scroll and blower wheel are heavy gauge, galvanized steel.
- Coil connections: 1/2" CW on CV006, 3/4" on CV015-022 chilled water. 1/2" HW on CV015-022 hot water.